



BARDEX[®]

Raising the Bar Together.

Innovative Systems.

Proven Performance.

Global Expertise.



RELYING ON BRILLIANT ENGINEERING ISN'T ENOUGH TO TAKE DRAWINGS FROM YOUR DESKTOP TO A MULTI-MILLION DOLLAR, FIELD-PROVEN REALITY. OUR UNWAVERING COMMITMENT MAKES ALL THE DIFFERENCE.



Innovative Systems.
Proven Performance.
Global Expertise.

 **BARDEX**[®]
Raising the Bar Together.

OUR APPROACH: GOING BEYOND THE EXPECTED

Our approach to your business is better because we go further. Bardex® gives more – every time.

Bardex goes beyond what is expected. We believe that it's not enough to solve our clients' problems: We strive to solve their customers' problems, as well.

It is our people and their desire to make your project a success that brings technical transparency from the start. Our engineers drive the project with you from ideation to execution. This, along with our openness and willingness to share our industry-leading experience, provides a culture of creative problem-solving as a team.

We go deeper to understand our clients' needs from early concept to end of project life. Our method is a case study in experience, collaboration, and trust. We fully engage every single inquiry as though we'll ultimately be awarded the project – not just another RFP rote response. From investigation to inspiration to final execution, we work with you to deliver an inspired, workable, vetted solution. Whether you choose us or not, we will be your Trusted Advisors.

The Bardex difference is as much in the journey as it is in the final solution. Together, we talk. We listen. We seek first to understand your specific challenges. Then we strive to inspire and to build on smart ideas. We solve complex problems. And then we build. We stand with you every step of the way.



KEY STATISTICS

- \$50M+ Annual Turnover
- More than 300 completed projects
- Our shiplifts have a 100% safety record with no reportable incidents
- More than 20 patents
- 60+ employees globally

TARGET MARKETS

- Defense
- Shipyards
- Ports
- Oil & Gas
- Offshore Wind

A GLOBAL REACH

Bardex has installed equipment onshore – and off – on every continent and ocean except Antarctica. But we're no strangers to harsh weather either! We've built equipment to withstand temperatures down to -40°C .

FACILITIES

Bardex is growing in 2025 with three new offices across the globe: the UK, Australia, and Brazil.

Bardex Headquarters: The Santa Barbara metropolitan area has been home to Bardex HQ since its beginnings in 1963.

Houston Office: The heart of the Energy Corridor is the seat of our engineering, quality, and project management teams.

Bardex Industries: Our state-of-the-art, full-scale manufacturing facility in Busan, South Korea – a major shipbuilding hub – is part of our strategy to support our clients' goals for quality, scheduling, and cost.

UK: The reestablishment of a European base underscores our commitment to growing and supporting clients and projects across Europe, the Middle East, and Africa.

Australia: After more than 40 years of successful projects, Bardex opened an office in Melbourne to serve Australian defense, marine, and facilities interests directly.

Brazil: Our local field service aims to guide offshore mooring integrity management for clients struggling with inadequate support from their OEMs.

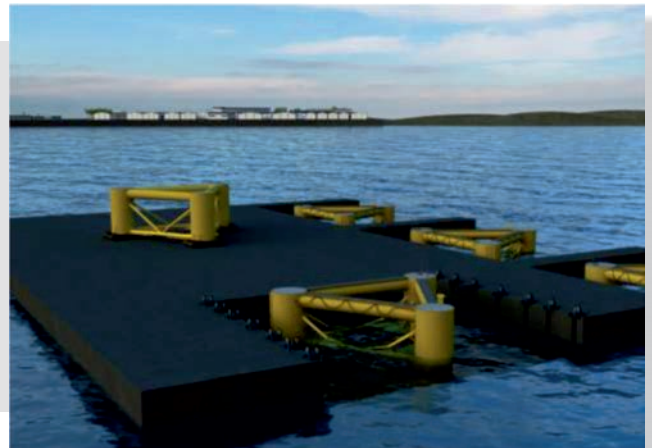


SIGNATURE PRODUCTS AND SERVICES



OmniLift®: Shiplift – We build the world's most technologically advanced shiplift drydock with an elegant design for easier, more affordable maintenance. Our chain jacks adapt to challenges beyond lifting tugboats, frigates, and submarines. From uncrewed vessels to entire floating wind turbines, we have a system to future-proof your shipyard.

OmniDock™ – Supported by the Safer Ingenieure sas ALFOWT modular floating hub and C²C construction method, lets you move from island to island, shipyard to shipyard, or port to port with the aid of tugboats.



Predictive Intelligence – Bardex takes a unique approach in defining your shiplift parameters using real-time data analytics. An accurate understanding of your market, combined with site-specific limitations, such as channel depth, provides us the key insight to draft the optimal shiplift designed to maximize your ROI.

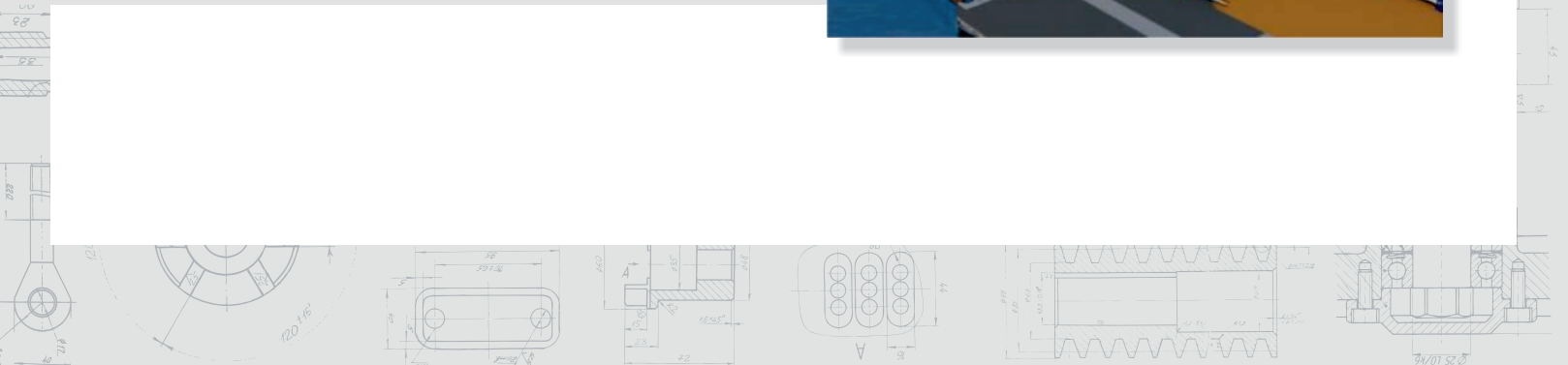


BarLatch® – Our award-winning offshore mooring fairlead pairs with our patented Off Vessel Tensioning (OVT) method.



BarMoor® – This award-finalist mooring system is suitable for the oil & gas and offshore wind industries.

OmniCrane – A self-contained system capable of lifting and positioning all the components that make up any size wind turbine generator, including tower sections, nacelle, hub, and blades. By assembling the nacelle, hub, and two of the three blades over land, at quay level, the number of heavy lifts is minimized and working over water is eliminated. This simplifies installation and reduces risk, assembly issues, and the possibility of weather delays.



AWARDS



- **BarLatch®**: ASNE BMEA Best Mechanical Engineering Award at OTC DMEA Winner 2024
- **BarMoor® Quick Connector**: ASME BMEA Best Mechanical Engineering Award at OTC Best Innovation 2025

- **BarMoor® Quick Connector**: RenewableUK's Global Offshore Wind Gamechanger Award Finalist 2024
- **OmniLift®**: Ventus 2023 Finalist
- **OmniCrane**: Ventus 2025 Finalist

CERTIFICATIONS



ISO 9001 Quality Management System at the Houston (Wickchester), Goleta, and Korea facilities

ISO 45001 Occupational Health and Safety Management System at the Goleta and Korea facilities

ISO 14001 Environmental Management System at the Goleta and Korea facilities

PAST CLIENTS



NEW SERVICES, FIELD SERVICE AND SPARE PARTS

Marine Infrastructure Advisory: We help clients design fit-for-purpose facilities across a broad spectrum of marine industries: counseling shipyards and ports, supporting Defenses mission readiness, and empowering diverse energy industries across offshore wind, oil, and gas. We deliver guidance built for real-world demands.



Mooring Integrity Management: How can you extend or preserve the life of a mooring system? From resolving challenges in aging equipment to supporting vessels undergoing life extension beyond the original design, Bardex has a solution for your situation.

Field Service and Spare Parts: Our systems for the shipyard, oil and gas, and offshore wind industries have a long lifespan. Rest assured that 10, 20, 30 years from now – or longer, you'll have our continued support for any servicing & spare parts you need.



OUR PROJECTS



The background of the page is a light gray technical drawing, likely a mechanical part, showing various views and dimensions. The drawing includes labels such as 'A10-74', 'H24 x 5.8', and '6x1.5'. It features a central circular component with a hole, surrounded by various rectangular and cylindrical shapes, all with precise dimension lines and numerical values.

CONTACT

Bardex Corporation Headquarters (USA)

130 Robin Hill Rd., Suite 105
Goleta, California 93117, USA
Tel: +1 805-964-7747

United Kingdom Office

Bardex Energy UK, Limited
Office 310, The Quadrus Centre
Woodstock Way, Boldon Business Park
Tyne & Wear, NE35 9PF, United Kingdom

CONTACT:

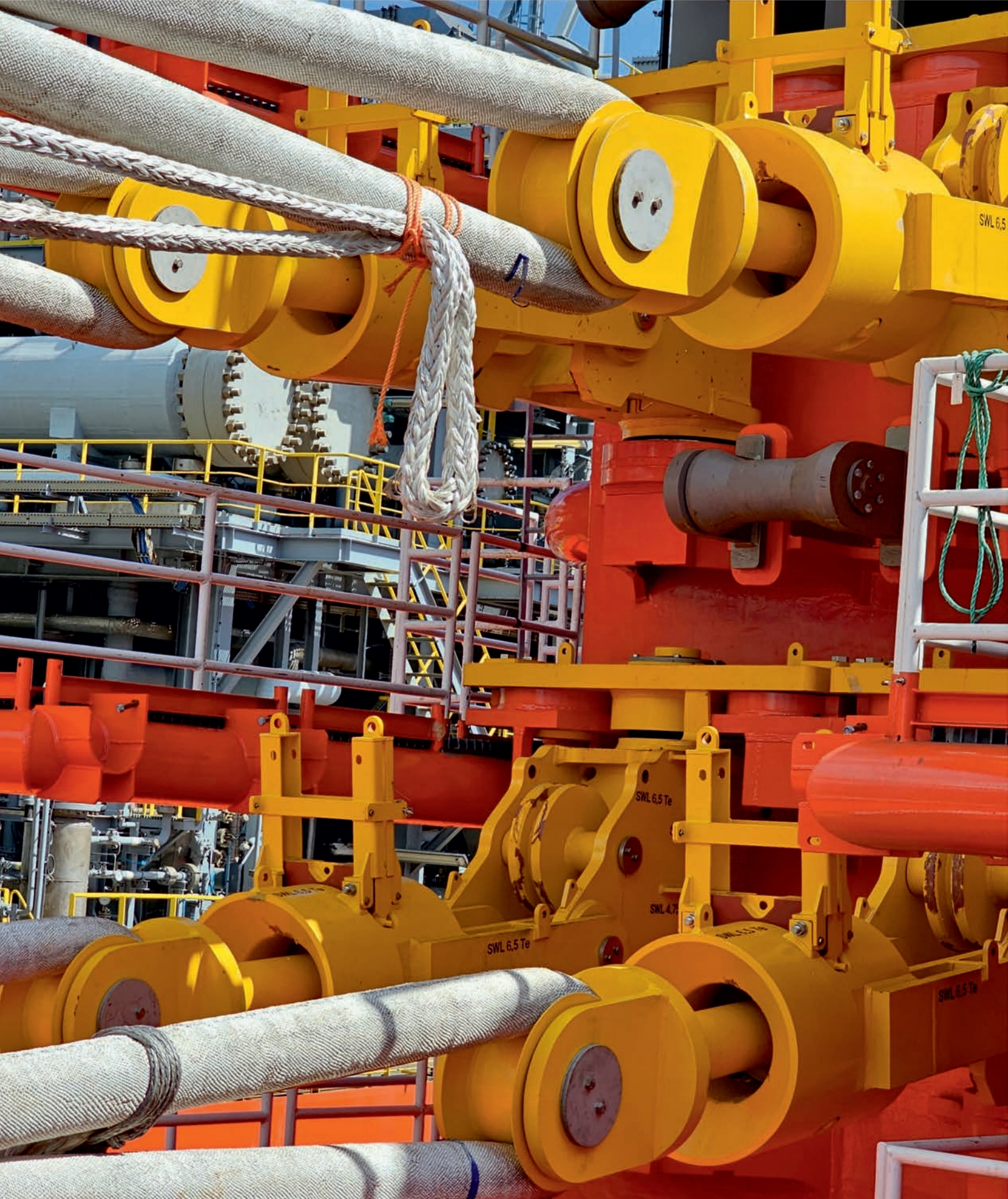
Ian Finch
Director of Business Development – EMEA
Tel: +44 191 519 7454
Mobile: +44 7443 412 345
Email: ifinch@bardex.com

European Union Office (Poland)

św. Filipa 23/3
31-150 Kraków, Poland

CONTACT:

Joanna Sek
Business Development Manager, Europe
Tel: +48 530-772-764
Email: jsek@bardex.com



Innovative Systems.
Proven Performance.
Global Expertise.



BARDEX[®]
Raising the Bar Together.